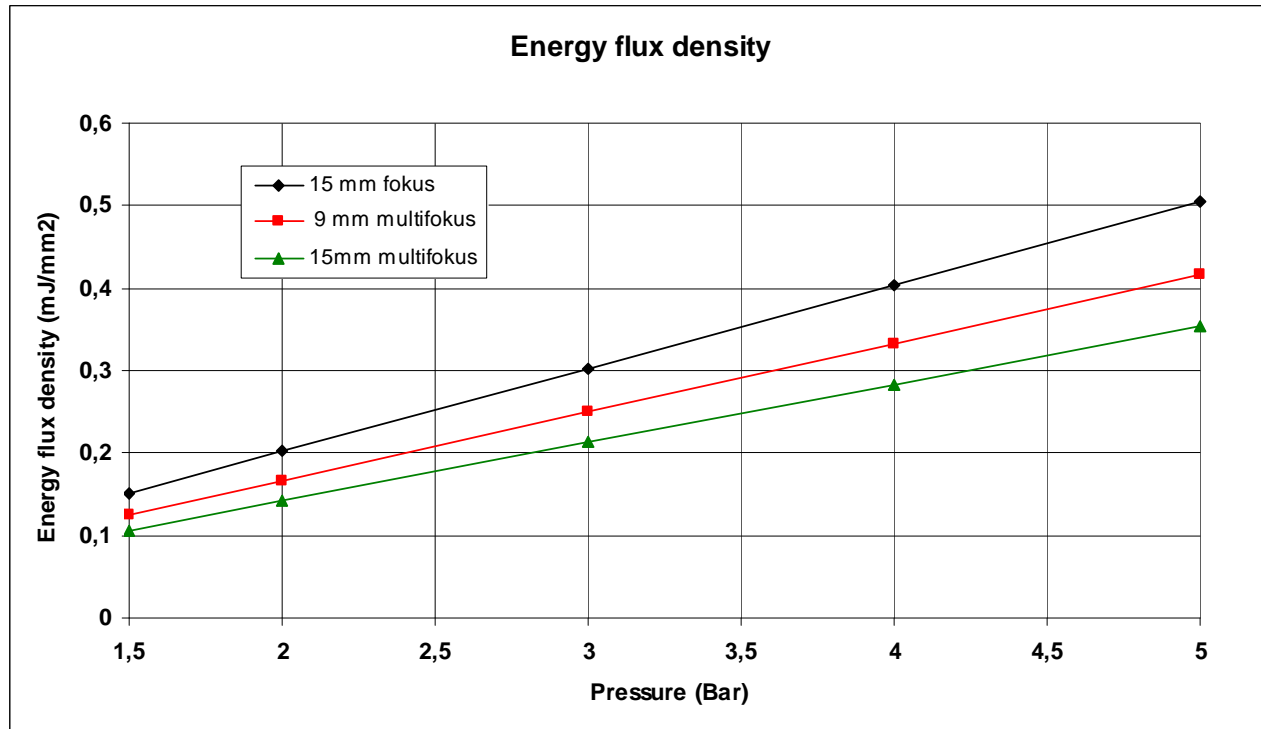


BTL Shockwave applicator



15 mm focus transmitter		1,5 bar	2 bar	3 bar	4 bar	5 bar
Energy flux density	mJ/mm ²	0,15	0,22	0,30	0,41	0,51
Max. positive pressure	MPa +	7,58	10,11	15,16	20,21	25,27
Max. negative pressure	MPa -	3,04	4,06	6,09	8,12	10,15

9 mm multifocus transmitter						
Energy flux density	mJ/mm ²	0,13	0,17	0,25	0,33	0,42
Max. positive pressure	MPa +	6,28	8,37	12,55	16,73	20,92
Max. negative pressure	MPa -	2,49	3,32	4,97	6,63	8,28

15 mm multifocus transmitter						
Energy flux density	mJ/mm ²	0,11	0,14	0,21	0,28	0,36
Max. positive pressure	MPa +	5,32	7,09	10,63	14,17	17,72
Max. negative pressure	MPa -	2,07	2,76	4,14	5,52	6,90

Comparison of Acoustic pressure field of different SWT transmitters

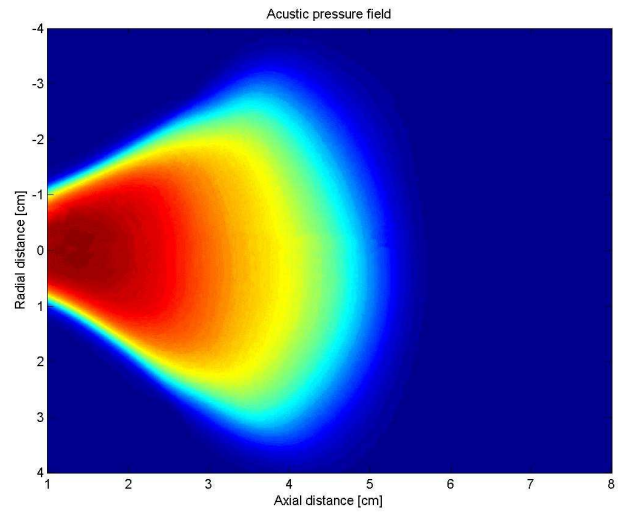
Standard radial transmitter

Diameter 15 mm

The energy is delivered radially

Effective treatment area 0-3 cm

Max. Penetration depth 4 cm



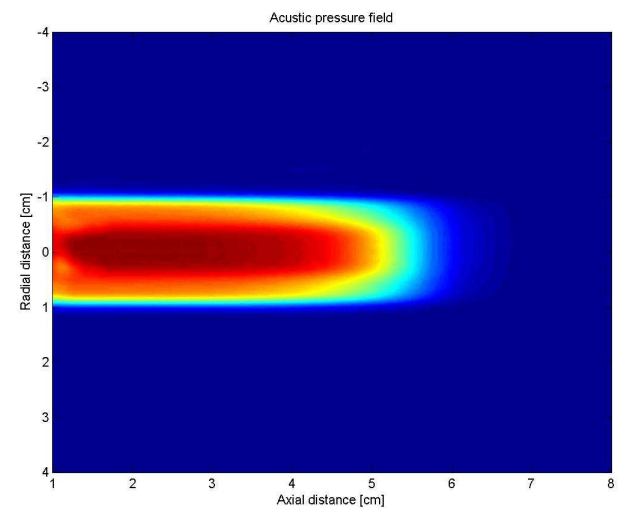
BTL Multifocused transmitter

Diameter 15 mm

The energy is focused in more focal point, which are creating big focal area

Effective treatment area 0-5 cm

Max. penetration depth up to 6 cm



BTL Focused transmitter

Diameter 15 mm

The energy is focused in one focal point

Effective treatment area 2-3 cm

Max. penetration depth up to 4 cm

